

## **2009 NEW PRODUCT RANGE**

**2009 PRODUCT RANGE**

## **RAISE THE PERFORMANCE**

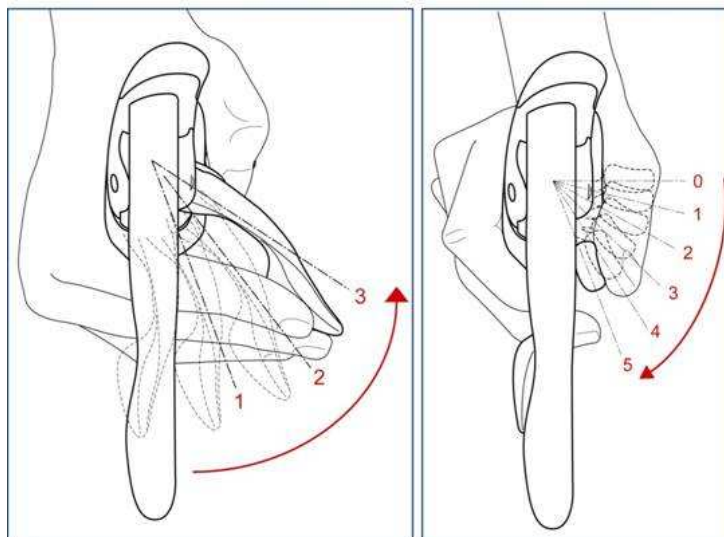
**We have focused on:**

- Ergopower™ controls
- Drivetrain
- Wheels

**2009 PRODUCT RANGE**

- Multiple shifting capability

The shifters can downshift up to three cogs (i.e. 12T→13T→14T→15T) with one single lever throw, and can upshift up to five cogs (i.e. 17T'→16T→15T→14T→13T→12T) with one single lever throw.

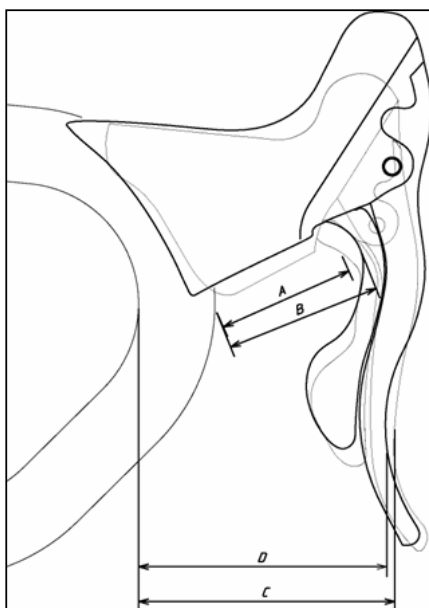
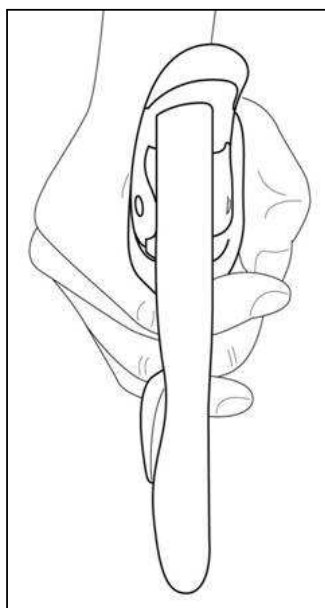
**2009 PRODUCT RANGE**

## ULTRA-SHIFT™ ERGOPOWER™ CONTROLS

### Improved and maximized:

- Ergonomics
- Comfort
- Activation effort and throw
- Braking performance

**2009 PRODUCT RANGE**



- Designed for the best possible human interface.

- Shape is asymmetrical like human hands.

- More space for rider's fingers

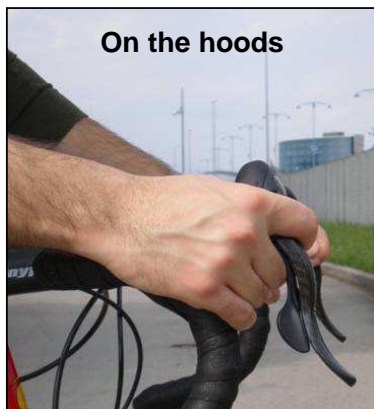
**A ⇒ B = + 10%**

- Shorter reach

**D ⇒ C = - 4%**

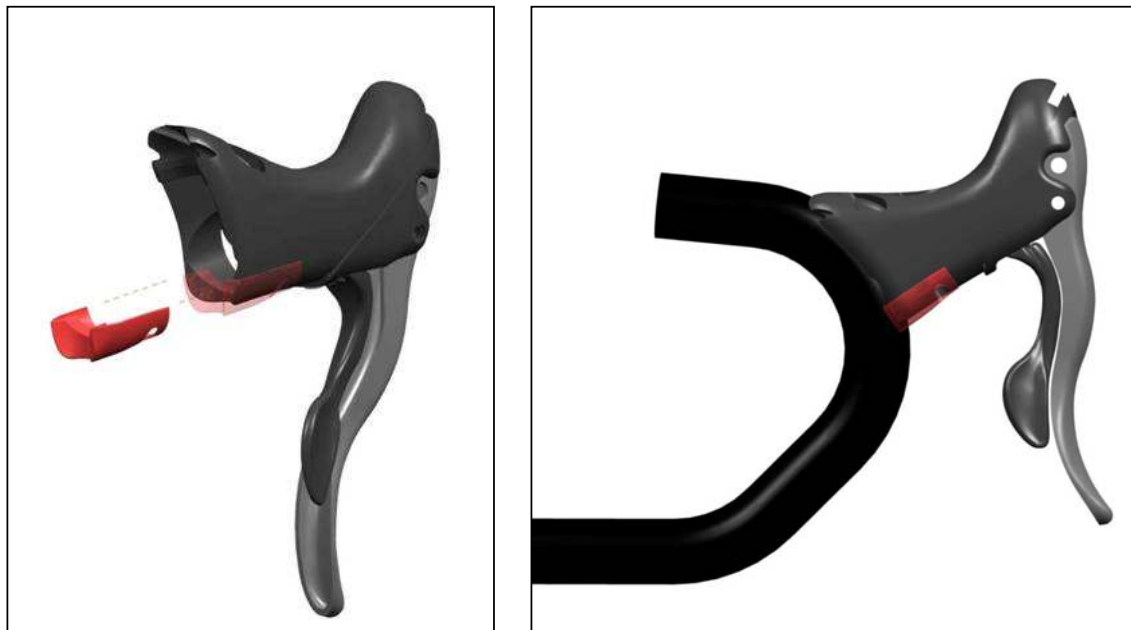
**2009 PRODUCT RANGE**

Superior ergonomics for all different hand positions.



**2009 PRODUCT RANGE**

## INSERT FOR BIGGER HANDS

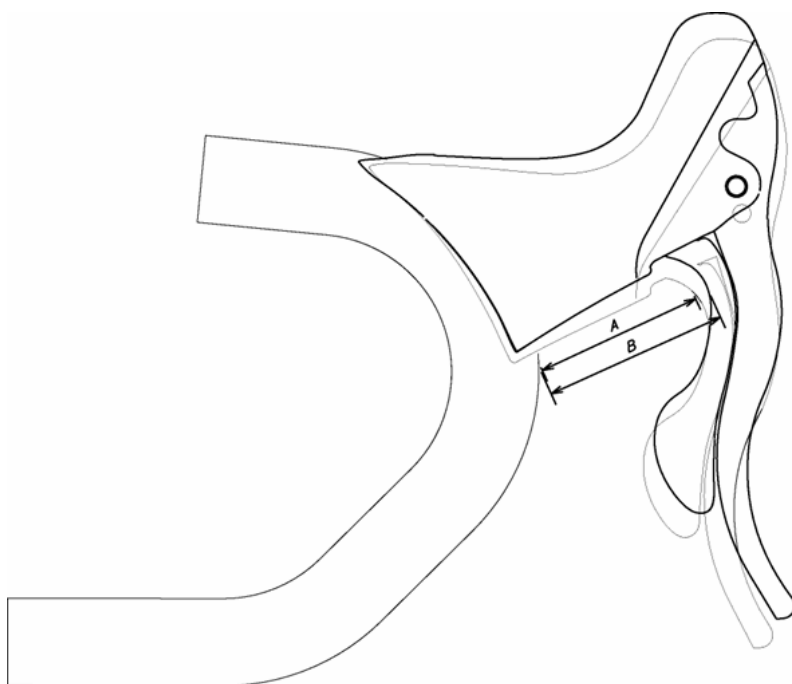


**2009 PRODUCT RANGE**

## INSERT FOR BIGGER HANDS

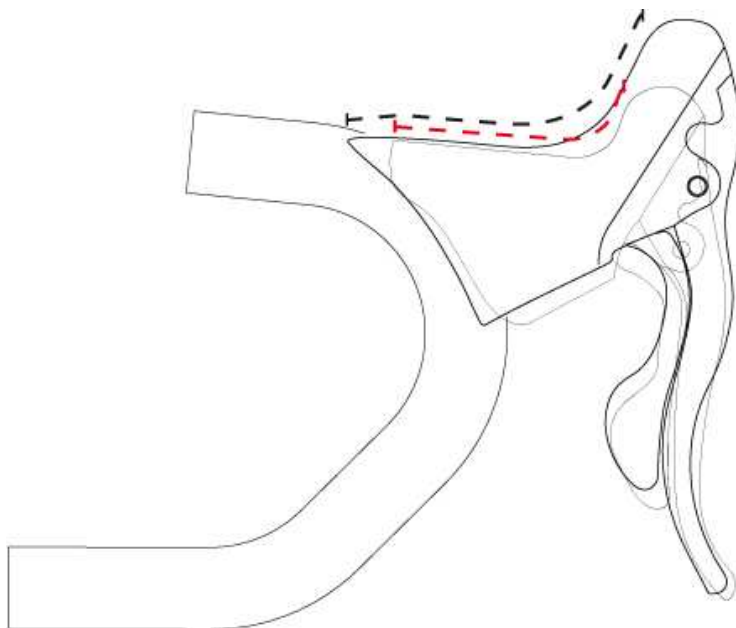
Increased excursion for safety enhancement

**A → B = + 8%**

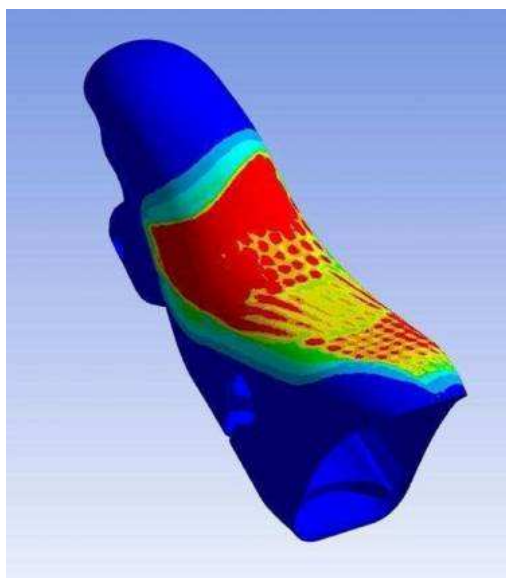


**2009 PRODUCT RANGE**

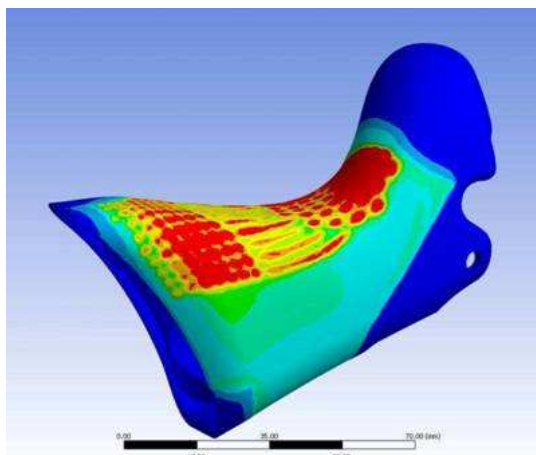
Bigger contact surface **+15%**



**2009 PRODUCT RANGE**

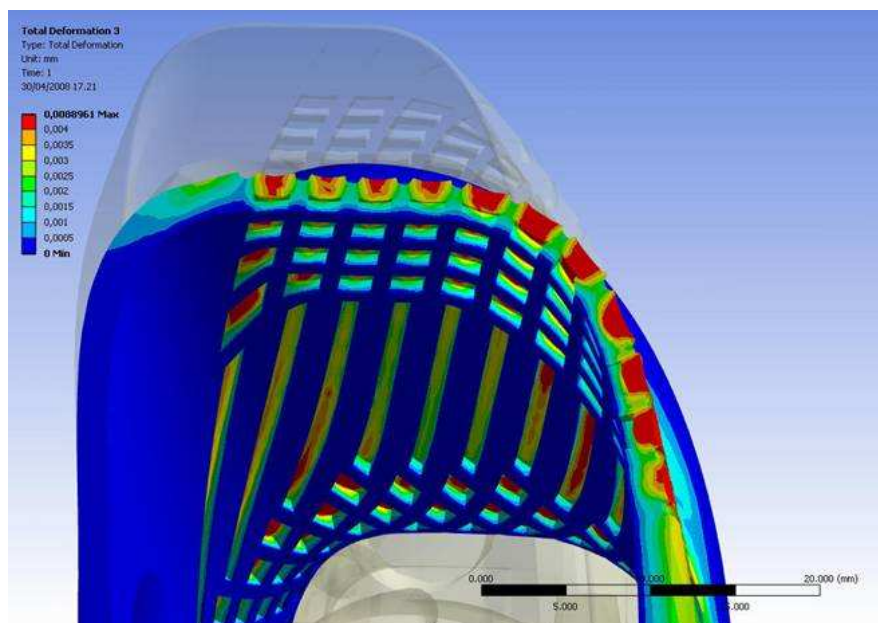


**Vari-Cushion™ hoods:**  
different softness in different areas, anallergic, elastic,  
excellent shape memory, UV stability and wide  
temperature stability



**2009 PRODUCT RANGE**

## Vari- Cushion™ hoods cross section sample



2009 PRODUCT RANGE



**No-Bulge™ casing routing:**  
improved handlebar interface, avoids  
uncomfortable bulges where the hands rest.



2009 PRODUCT RANGE

## PROJECT TARGETS

- To have the lightest and smoothest rear derailleur shifting
- To reduce the front derailleur shifting throw and improve the shifting quickness and efficiency

2009 PRODUCT RANGE

## TARGETS ACHIEVED

Rear derailleur shifting effort

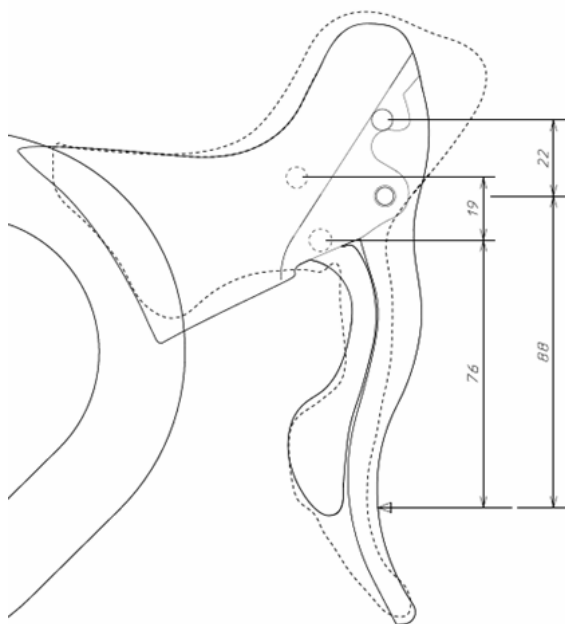
**- 13%**

Front derailleur shifting throw

**- 18%**

2009 PRODUCT RANGE

## BRAKING ON THE DROPS

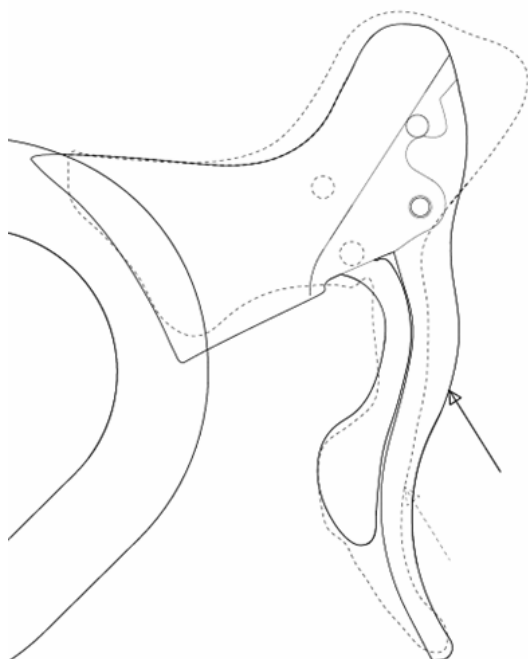


FEATURES	BENEFITS
Double bend lever and new pivot position	High pivot ergonomic brake lever: more powerful braking from the hoods.
	More efficient grabbing, easier to modulate

Same ratio 1: 4 of competitor

2009 PRODUCT RANGE

## BRAKING ON THE HOODS



FEATURES	BENEFITS
Double bend lever and new pivot position	High pivot ergonomic brake lever: more powerful braking from the hoods.
	More efficient grabbing, easier to modulate

2009 PRODUCT RANGE

## GROUPSETS



**2009 PRODUCT RANGE**

## VELOCE™ 10 SPEED

**2009 PRODUCT RANGE**

Record™	Dura-Ace 2008	Red 2008
Chorus™	Dura-Ace 2008	-
Centaur™ carbon	Ultegra SL 2008	Force 2008
Centaur™ aluminium	Ultegra 2008	-
<b>Veloce™</b>	<b>105 2008</b>	<b>Rival 2008</b>

## 10s REAR DERAILLEUR



FEATURES	BENEFITS
<b>aluminium bodies</b>	mechanical strength, weight savings, stiffness, minimum ageing
<b>rollers on sintered metal bushings</b>	long life, low friction
<b>rollers in special rubber</b>	damping of vibrations

### Options:

short and medium cage

Weight: 255 g

## 10s FRONT DERAILLEUR



FEATURES	BENEFITS
unified Standard/Compact cage	versatility
chrome-plated nickel cage	long life and low wear, protection from rust

## Options:

braze-on, clip-on Ø 32 or 35 mm

Weight: 92 g

2009 PRODUCT RANGE

## 10s ESCAPE™ ERGOPOWER™ CONTROLS



FEATURES	BENEFITS
aluminium brake lever	reliability, stiffness, mechanical strength, long fatigue life, corrosion-proof
body made of technopolymer with long glass fibre	mechanical strength and corrosion-proof, weight savings, stiffness, minimum ageing
internal Escape™ mechanism	minimum wear, minimum maintenance, weight savings, precision, indexing on the front derailleur
silicone hood	anallergic, elastic, memory of form, stability with UV and high temperatures
fast brake opening control in the brake lever	ergonomics, safety

Weight: 351 g

2009 PRODUCT RANGE

## 10s ULTRA-SHIFT™ ERGOPOWER™ CONTROLS



FEATURES	BENEFITS
<b>Aluminium brake lever</b>	reliability, stiffness, mechanical strength, corrosion-proof, long fatigue life
<b>Rolling mechanism on low-friction polymer</b>	minimal friction, very high and constant precision, lighter shifting and constant shifting accuracy, basically no wear but serviceable nonetheless

Weight: 349 g

**2009 PRODUCT RANGE**

## 10s UD™ SPROCKETS



FEATURES	BENEFITS
<b>sprocket synchronization</b>	fast precise shifting, less stress for the chain
<b>Ultra-Drive™ machining of the teeth</b>	chain passage optimization
<b>galvanized</b>	rust-proof

**Options:**

11-25, 12-23, 12-25 ,13-26 ,13-29

Weight: 250 g

**2009 PRODUCT RANGE**

## 10s UD™ CHAIN



FEATURES	BENEFITS
width 5.9mm	quiet operation, less interference with adjacent sprockets and chainrings, high-performance shifting
HD-Link™	high retention force

Weight: 272 g

**2009 PRODUCT RANGE**

## 10s ULTRA-TORQUE™ CRANKSET



### Options:

170 mm, 172.5 mm, 175 mm  
39-53



### Options:

170 mm, 172.5 mm, 175 mm  
34-50

**2009 PRODUCT RANGE**

**10s ULTRA-TORQUE™ CRANKSET**

FEATURES	BENEFITS
<b>forged aluminium cranks</b>	excellent mechanical specifications, long fatigue life
<b>sheared-drawn light alloy chainrings</b>	more rigid for same weight
<b>pedal shoulder area tapered washer</b>	longer fatigue life
<b>8 pins on the large chainring</b>	faster shifting
<b>Ultra-Torque BB system</b>	lightness, stiffness, simplified assembly and maintenance

Weight: 905 g

**2009 PRODUCT RANGE**

**DUAL PIVOT BRAKES**

FEATURES	BENEFITS
<b>forged arms</b>	stronger, maximum life cycle
<b>special pad compound</b>	excellent balance between performance on dry and wet surface, modulable braking and long pad life

Weight: 327 g

**2009 PRODUCT RANGE**

**SKELETON™ BRAKES**


FEATURES	BENEFITS
<b>forged arms</b>	stronger, maximum life cycle
<b>skeletonized arms</b>	greater weight savings with same stiffness
<b>special pad compound</b>	excellent balance between performance on dry and wet surface, moduable braking and long pad life
<b>differentiated front-rear</b>	powerful front, light and moduable rear

Weight: 350 g

**2009 PRODUCT RANGE**
**CENTAUR™ 10 SPEED**
**2009 PRODUCT RANGE**

Record™	Dura-Ace 2008	Red 2008
Chorus™	Dura-Ace 2008	-
<b>Centaur™ carbon</b>	<b>Ultegra SL 2008</b>	<b>Force 2008</b>
<b>Centaur™ aluminium</b>	<b>Ultegra 2008</b>	<b>-</b>
Veloce™	105 2008	Rival 2008

**2009 PRODUCT RANGE**

## 10s REAR DERAILLEUR



FEATURES	BENEFITS
<b>aluminium bodies</b>	mechanical strength, weight savings, stiffness, minimum ageing
<b>rollers on sintered metal bushings</b>	long life, low friction
<b>rollers in special rubber</b>	damping of vibrations

### Options:

short and medium cage

Weight: 220 g

**2009 PRODUCT RANGE**

## 10s FRONT DERAILLEUR



FEATURES	BENEFITS
<b>Z-Shape™ internal arm</b>	greater stiffness, better leverage on the cage
<b>M-Brace™ body</b>	stiffer system, better shifting
<b>Unified Standard/CT cage</b>	versatility
<b>Even-O™ clamp</b>	pressure is more evenly distributed onto the seat tube
<b>Surface treatments</b>	protection from rust
<b>Chrome-plated nickel cage</b>	long life and low wear

Z-Shape™ internal arm



M-Brace™ body



Even-O™ clamp



**Options:**  
 braze-on  
 clip-on Ø 32 mm  
 clip-on Ø 35 mm

Weight: 102 g

**2009 PRODUCT RANGE**

## 10s ULTRA-SHIFT™ ERGOPOWER™ CONTROLS



FEATURES	BENEFITS
<b>Aluminium brake lever</b>	reliability, stiffness, mechanical strength, long fatigue life, corrosion proof
<b>Rolling mechanism on low-friction polymer</b>	minimal friction, very high and constant precision, lighter shifting and constant shifting accuracy, basically no wear but serviceable nonetheless

Weight: 353 g

**2009 PRODUCT RANGE**

## 10s ULTRA-SHIFT™ CARBON ERGOPOWER™ CONTROLS



FEATURES	BENEFITS
<b>Carbon brake lever</b>	weight savings, reliability, stiffness, mechanical strength, corrosion-proof, long fatigue life
<b>Rolling mechanism on low-friction polymer bushings</b>	minimal friction, very high and constant precision, lighter shifting and constant shifting accuracy, basically no wear but serviceable nonetheless

Weight: 328 g

**2009 PRODUCT RANGE**

## 10s UD™ SPROCKETS



FEATURES	BENEFITS
<b>sprocket synchronization</b>	fast precise shifting, less stress for the chain
<b>Ultra-Drive™ machining of the teeth</b>	chain passage optimization
<b>nickel-chrome surface treatments</b>	longer life, lower wear

**Single sprockets**

**Options:**

11-25, 12-23, 12-25 ,13-26 ,13-29, 14-23

Weight: 235 g

**2009 PRODUCT RANGE**

## 10s UD™ CHAIN



FEATURES	BENEFITS
width 5.9 mm	quiet operation, less interference with adjacent sprockets and chainrings, high-performance shifting
HD-Link™	extremely high retention force
lightened links	weight savings
antifriction treatment	smoothness, long life

Weight: 268 g

**2009 PRODUCT RANGE**

## 10s ULTRA-TORQUE™ CRANKSET



### Options:

170 mm, 172.5 mm, 175 mm  
39-52, 39-53



### Options:

170 mm, 172.5 mm, 175 mm  
34-50

**2009 PRODUCT RANGE**

## 10s ULTRA-TORQUE™ CRANKSET

FEATURES	BENEFITS
forged aluminium cranks	excellent mechanical specifications, long fatigue life
sheared-drawn chainrings	more rigid for same weight
pedal shoulder area tapered washer	longer fatigue life
8 pins on the large chainring	faster shifting
Ultra-Torque BB system	lightness, stiffness, simplified assembly and maintenance

Weight: 905 g

**2009 PRODUCT RANGE**

## 10s ULTRA-TORQUE™ CARBON CRANKSET



### Options:

170 mm, 172.5 mm, 175 mm

39-52, 39-53



### Options:

170 mm, 172.5 mm, 175 mm

34-50

**2009 PRODUCT RANGE**

## 10s ULTRA-TORQUE™ CARBON CRANKSET

FEATURES	BENEFITS
full-carbon unidirectional-multidirectional cranks	stiffness, weight savings, longer fatigue life
sheared-drawn chainrings	more rigid for same weight
8 pins on the large chainring	faster shifting
Ultra-Torque BB system	lightness, stiffness, simplified assembly and maintenance

Weight: 760 g

**2009 PRODUCT RANGE**

## SKELETON™ BRAKES



Weight: 334 g

FEATURES	BENEFITS
forged arms	stronger, maximum life cycle
skeletonized arms	greater weight savings with same stiffness
special pad compound	excellent balance between performance on dry and wet surface, moduable braking and long pad life
differentiated front-rear	powerful front, light and moduable rear
orbital pad adjustment	optimum interface with the rim, maximum braking performance

**2009 PRODUCT RANGE**

## 2009 NEW RECORD AND CHORUS

2009 PRODUCT RANGE




### ULTRA-SHIFT™ 11 speed DRIVETRAINS

**11**  
**SUPER RECORD™**

**RECORD™** *11*

**CHORUS™** *11*

2009 PRODUCT RANGE

		
<b>Super Record 11S™</b>	--	--
<b>Record 11S™</b>	<b>Dura-Ace</b>	<b>Red</b>
<b>Chorus 11S™</b>	--	--
<b>Centaur 10S™ carbon</b>	<b>Ultegra SL</b>	<b>Force</b>
<b>Centaur 10S™ aluminium</b>	<b>Ultegra</b>	--
<b>Veloce 10S™</b>	<b>105</b>	<b>Rival</b>

## ULTRA-SHIFT™ 11 SPEED DRIVETRAINS

Improved and maximized:

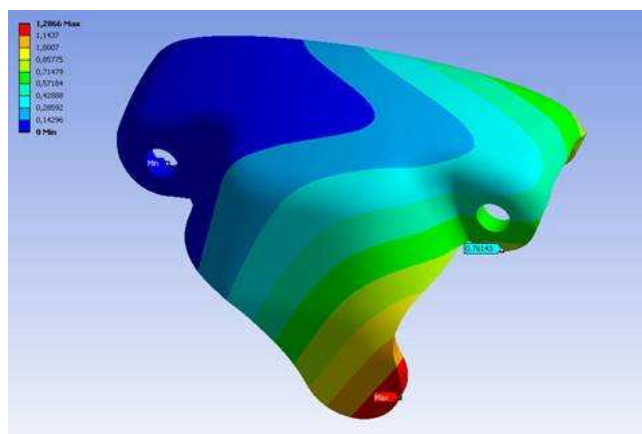
- Shifting efficiency
- Shifting precision
- Smoothness
- Lightweight
- An overall sprocket set 12/27
- the 18 teeth sprocket



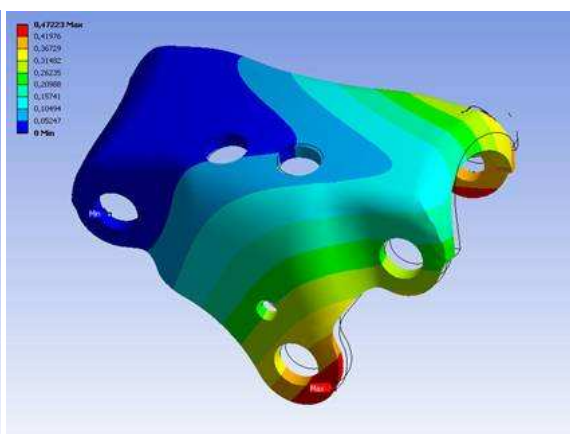
FEATURES	BENEFITS
<b>Ultra Shift™ forged aluminium upper body</b>	weight savings and long fatigue life, free-play reduction, better and extended shifting accuracy
<b>Ultra Shift™ carbon fiber outer plate</b>	better and extended shifting accuracy, greater stiffness, free-play reduction, weight savings and long fatigue life, corrosion-proof

**2009 PRODUCT RANGE**

2008 OUTER PLATE



2009 OUTER PLATE



**INCREASED TORSIONAL STIFFNESS**

**+ 150%**

**2009 PRODUCT RANGE**



FEATURES	BENEFITS
Ultra Shift™ parallelogram geometry	increased stiffness, better and extended shifting accuracy, free-play reduction

**2009 PRODUCT RANGE**



FEATURES	BENEFITS
lightened rollers in special rubber	weight savings, damping of vibrations

**2009 PRODUCT RANGE**



Shaped inner cage to maximize the stiffness of the front derailleur and the quickness of the shifting operation. This gives more clearance to chain crossing.

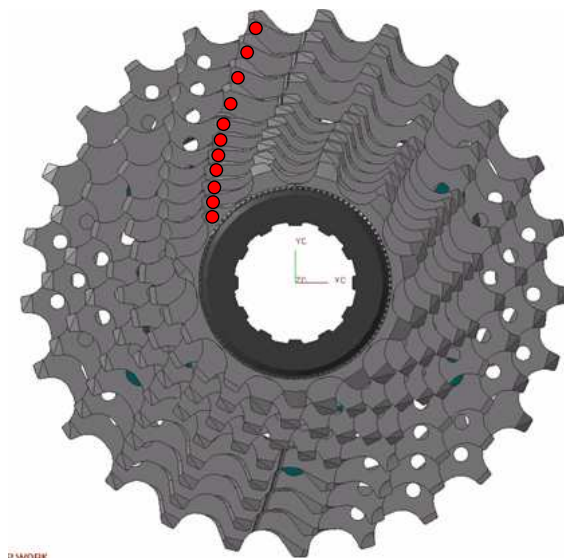
**2009 PRODUCT RANGE**

- Reduced thickness from 5.9 mm to 5.5 mm
- New Ultra Link™ system

**2009 PRODUCT RANGE**

## Sprockets synchronization

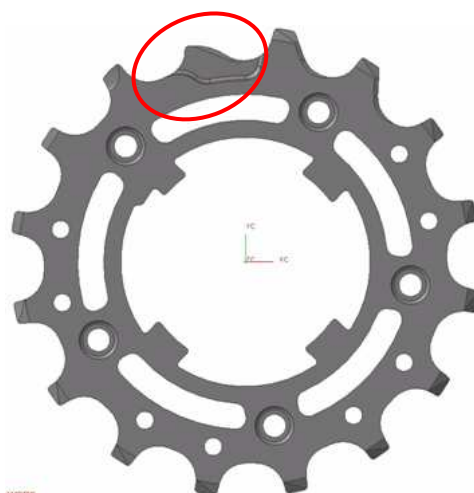
FEATURES	BENEFITS
Ultra-Shift™ sprockets synchronization	improved shifting precision, less stress for the chain



2009 PRODUCT RANGE

## Ultra-Shift™ teeth shape

FEATURES	BENEFITS
Ultra-Shift™ teeth shape	upshift optimization



2009 PRODUCT RANGE

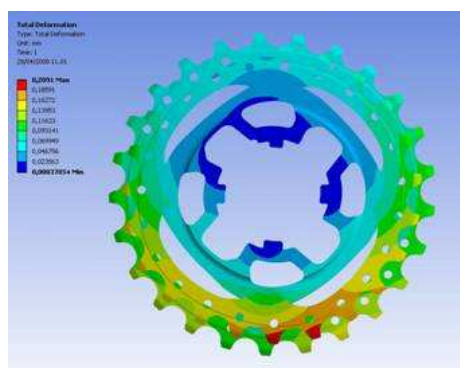
## Ultra-Shift™ aluminium frame for last two sprocket triplets

FEATURES	BENEFITS
Ultra-Shift™ aluminium frame for last two sprocket triplets	precision and greater stiffness, weight savings

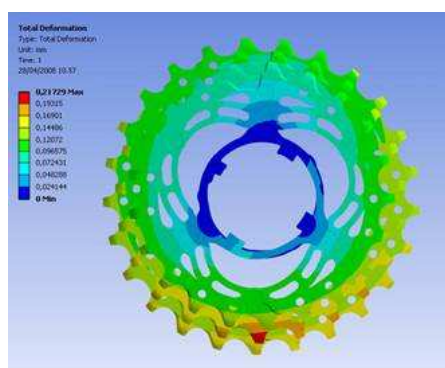


2009 PRODUCT RANGE

2008



2009

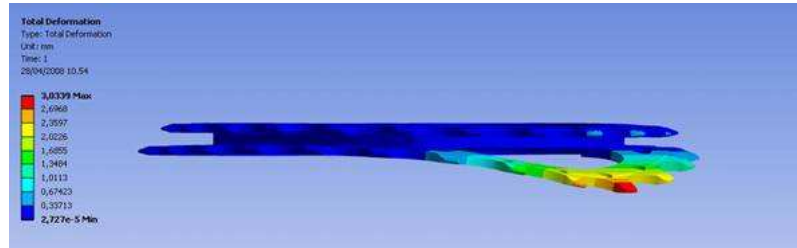


INCREASED TORSIONAL STIFFNESS

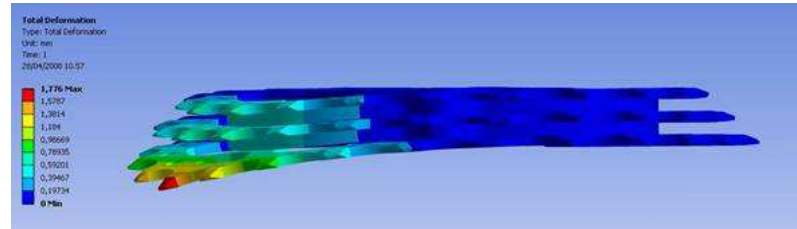
+ 180%

2009 PRODUCT RANGE

2008



2009

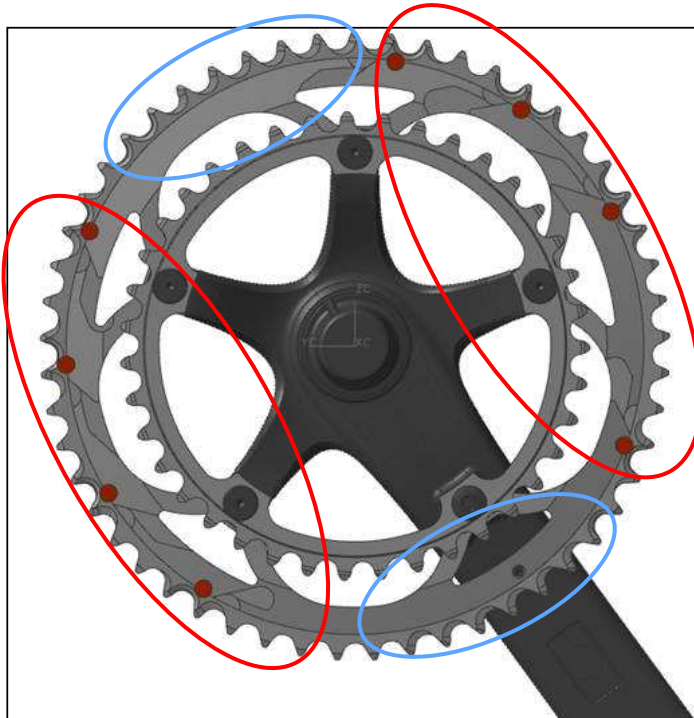


INCREASED BENDING STIFFNESS

+ 70%

2009 PRODUCT RANGE

### Ultra-Shift™ chainrings

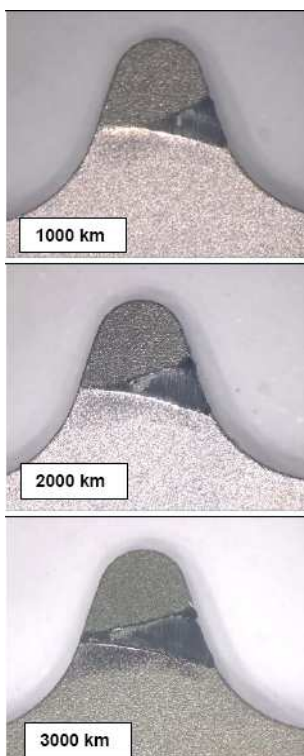


FEATURES	BENEFITS
Ultra-Shift™ chainrings synchronization	improved shifting precision and quickness
Ultra-Shift™ specialized shifting sectors on outer chainrings	improved shifting precision, quickness and efficiency
Ultra-Shift™ asymmetric teeth profile on inner chainrings	shifting and chain crossing optimization

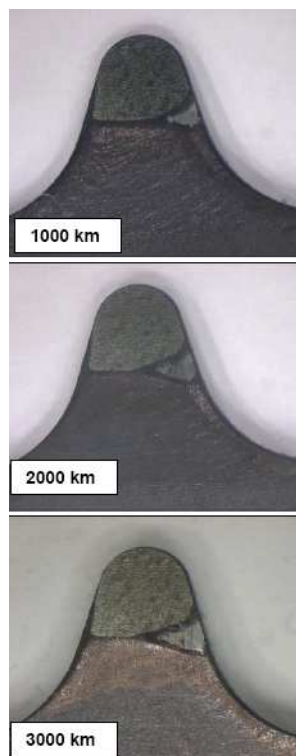
2009 PRODUCT RANGE

### Chainrings - Lab wearing test

Ultra-Drive antifriction treatment (2008)



Ultra-Shift hard-anodizing treatment (2009)



2009 PRODUCT RANGE

### Chainrings - Lab salt spray test (400 hours)

Ultra-Drive antifriction treatment (2008)

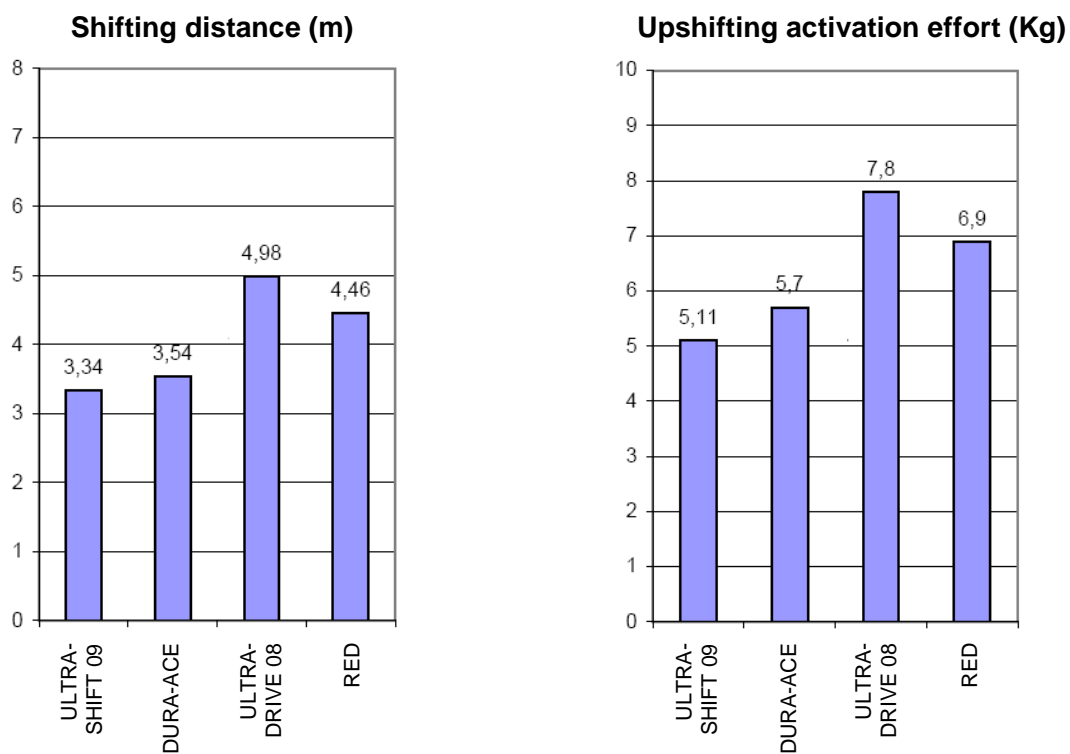


Ultra-Shift hard-anodizing treatment (2009)



2009 PRODUCT RANGE

### SHIFTING FIELD TEST (front derailleur)



2009 PRODUCT RANGE

**CHORUS™ 41<sup>TM</sup>**  
SPEED

2009 PRODUCT RANGE

## ULTRA SHIFT™ REAR DERAILLEUR



FEATURES	BENEFITS
Ultra Shift™ parallelogram geometry	increased stiffness, better and extended shifting accuracy, free-play reduction
Ultra Shift™ forged aluminium upper body	weight savings and long fatigue life, free-play reduction, better and extended shifting accuracy
Ultra Shift™ carbon fiber outer plate	better and extended shifting accuracy, free-play reduction, weight savings and long fatigue life, corrosion-proof
lightened rollers in special rubber	weight savings, damping of vibrations

Weight: 192 g

2009 PRODUCT RANGE

## ULTRA SHIFT™ FRONT DERAILLEUR



FEATURES	BENEFITS
Ultra-Shift™ outer plate	increased stiffness and shifting quickness
Ultra-Shift™ light alloy cage	weight savings, increased shifting quickness
Z-shape™ inner plate	greater stiffness, greater thrust on the fork
M-brace™ body	more rigid system, better shifting
standardised Standard/Compact cage	versatility
Even-O™ clamp	more even pressure on the frame, increased compatibility (34.8 ÷ 35.8 mm)
antifriction treatment	long life

## Options:

braze-on, clip-on Ø 32 or 35 mm

Weight: 76 g

2009 PRODUCT RANGE

## ULTRA-SHIFT™ CARBON ERGOPOWER™ CONTROLS



FEATURES	BENEFITS
carbon fiber brake lever	greater grip, weight savings, reliability, stiffness, mechanical strength, corrosion-proof, long fatigue life
Rolling mechanism on low-friction polymer bushings	minimal friction, very high and constant precision, lighter shifting and constant shifting accuracy, basically no wear but serviceable nonetheless

Weight: 328 g

2009 PRODUCT RANGE

## ULTRA SHIFT™ SPROCKETS



FEATURES	BENEFITS
Ultra-Shift™ sprockets synchronization	improved shifting precision, less stress for the chain
Ultra-Shift™ teeth shape	upshift optimization
optimized teeth space	longer life, lower wear
Ultra-Shift™ aluminium frame for last two sprocket triplets	precision and greater stiffness, weight savings
nickel-chrome surface treatments	longer life, lower wear
light-alloy lockring	weight savings

## Options:

11-23, 11-25, 12-25, 12-27

Weight: 236 g

2009 PRODUCT RANGE

## ULTRA SHIFT™ CHAIN



FEATURES	BENEFITS
width 5.5 mm	quiet operation, optimized clearance with adjacent sprockets and chainrings, high-performance shifting
Ultra-Link™ system	extremely high retention force
Ultra-Shift™ outer links	functionality, weight savings
Ni-PTFE antifriction treatment	smoothness, long life
new material for the outer link	20% more resistant, reliability, long life

Weight: 256 g

**2009 PRODUCT RANGE**

## ULTRA-TORQUE™ CARBON CRANKSET



### Options:

170 mm, 172.5 mm, 175 mm  
39-52, 39-53

### Options:

170 mm, 172.5 mm, 175 mm  
34-50

**2009 PRODUCT RANGE**

## ULTRA-TORQUE™ CARBON CRANKSET

FEATURES	BENEFITS
full-carbon unidirectional-multidirectional cranks	stiffness, weight savings and long fatigue life
Ultra-Shift™ light-alloy chainrings	weight savings, increased stiffness
Ultra-Shift™ hard-anodizing treatment	increased resistance to wear, corrosion-proof
Ultra-Shift™ chainrings synchronization	improved shifting precision and quickness
Ultra-Shift™ specialized shifting sectors on outer chainrings	improved shifting precision, quickness and efficiency
Ultra-Shift™ asymmetric teeth profile on inner chainrings	shifting and chain crossing optimization
light-alloy nuts and bolts	greater weight savings
8 pins on the large chainring	faster shifting
Ultra-Torque™ bb system	lightness, stiffness, simplified assembly and maintenance

Weight: 739 g

2009 PRODUCT RANGE

## SKELETON™ BRAKES



Weight: 318 g

FEATURES	BENEFITS
forged arms	stronger, maximum life cycle
skeletonized arms	greater weight savings with same life and stiffness
differentiated front-rear	powerful front, light and modifiable rear
orbital pad adjustment	optimum interface with the rim, maximum braking performance
special pad compound	excellent balance between performance on dry and wet surface, modifiable braking and long pad life
light-alloy hardware	weight savings

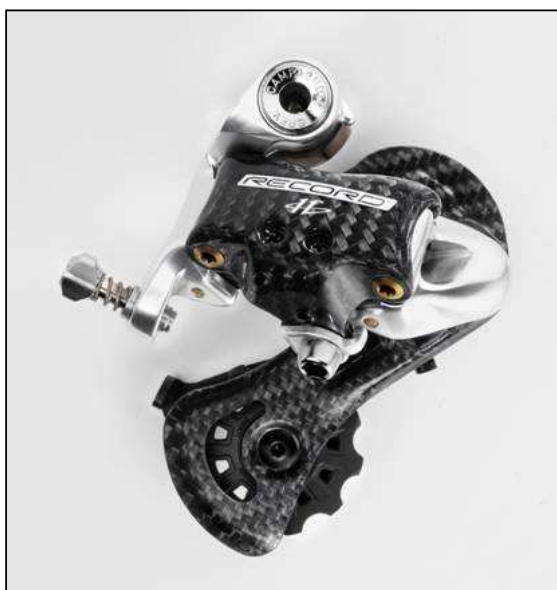
2009 PRODUCT RANGE

# RECORD™ 41<sup>TM</sup> SPEED

2009 PRODUCT RANGE

RECORD™

## ULTRA SHIFT™ REAR DERAILLEUR



FEATURES	BENEFITS
Ultra Shift™ parallelogram geometry	increased stiffness, better and extended shifting accuracy, free-play reduction
Ultra Shift™ forged aluminium upper body	weight savings and long fatigue life, free-play reduction, better and extended shifting accuracy
Ultra Shift™ carbon fiber outer plate	better and extended shifting accuracy, free-play reduction, weight savings and long fatigue life, corrosion-proof
metal-carbon cage	light, long fatigue life, corrosion-proof

Weight: 179 g

2009 PRODUCT RANGE

## ULTRA SHIFT™ REAR DERAILLEUR



FEATURES	BENEFITS
lightened rollers in special rubber	weight savings, damping of vibrations
rollers on ceramic bushings	lower friction, longer service life, lower power loss, weight savings, self-lubricating

2009 PRODUCT RANGE

## ULTRA SHIFT™ FRONT DERAILLEUR



FEATURES	BENEFITS
Ultra-Shift™ outer plate	increased stiffness and shifting quickness
Ultra-Shift™ aluminium-composite cage	weight savings, increased shifting quickness
Z-shape™ inner plate	greater stiffness, greater thrust on the fork
M-brace™ body	more rigid system, better shifting
standardised Standard/Compact cage	versatility
Even-O™ clamp	more even pressure on the frame, increased compatibility (34.8 ÷ 35.8 mm)
antifriction treatment	long life

## Options:

braze-on, clip-on Ø 32 or 35 mm

Weight: 75 g

2009 PRODUCT RANGE

## ULTRA-SHIFT™ CARBON ERGOPOWER™ CONTROLS



FEATURES	BENEFITS
<b>carbon fiber brake lever</b>	greater grip, weight savings, reliability, stiffness, mechanical strength, corrosion-proof, long fatigue life
<b>rolling mechanism on bearings</b>	minimal friction, very high and constant precision, lighter shifting and extended shifting accuracy, basically no wear but serviceable nonetheless

Weight: 338 g

2009 PRODUCT RANGE

## ULTRA SHIFT™ SPROCKETS



FEATURES	BENEFITS
<b>steel-titanium (3 Ti sprockets) version</b>	excellent compromise between weight savings and cost
<b>Ultra-Shift™ aluminium frame for last two sprocket triplets</b>	precision and greater stiffness, weight savings
<b>Ultra-Shift™ sprockets synchronization</b>	improved shifting precision, less stress for the chain
<b>Ultra-Shift™ teeth shape</b>	upshift optimization
<b>optimized teeth space</b>	longer life, lower wear
<b>nickel-chrome surface treatments on steel</b>	longer life, lower wear
<b>light-alloy lockring</b>	weight savings

## Options:

11-23, 11-25, 12-25, 12-27

Weight: 201 g

2009 PRODUCT RANGE

## ULTRA SHIFT™ CHAIN



FEATURES	BENEFITS
width 5.5 mm	quiet operation, less interference with adjacent sprockets and chainrings, high-performance shifting
Ultra-Link™ system	extremely high retention force
Ultra-Shift™ outer links	functionality, weight savings
Ni-PTFE antifriction treatment	smoothness, long life
hollow pins	weight savings
new material for the outer link	20% more resistant, reliability, long life

Weight: 242 g

2009 PRODUCT RANGE

## ULTRA-TORQUE™ CARBON CRANKSET

**Options:**

170 mm, 172.5 mm, 175 mm

STD: 39-52, 39-53

CT: 34-50

2009 PRODUCT RANGE

## NEW CERAMIC BEARINGS



FEATURES	BENEFITS
USB™ ceramic bearings with 5/32" premium-grade ceramic balls	ultra smooth, lower friction, longer service life, lower power loss, weight savings
technopolymer ball cage	lower friction

2009 PRODUCT RANGE

## ULTRA-TORQUE™ CARBON CRANKSET

FEATURES	BENEFITS
full-carbon unidirectional-multidirectional cranks	stiffness, weight savings and long fatigue life
hollow cranks (Ultra-Hollow™ Structure)	lower weight with same stiffness and life
Ultra-Shift™ light-alloy chainrings	weight savings, increased stiffness
Ultra-Shift™ hard-anodizing treatment	increased resistance to wear, corrosion-proof
Ultra-Shift™ chainrings synchronization	improved shifting precision and quickness
Ultra-Shift™ specialized shifting sectors on outer chainrings	improved shifting precision, quickness and efficiency
Ultra-Shift™ asymmetric teeth profile on inner chainrings	shifting and chain crossing optimization
triple gaskets low-friction bearing seals	good insulation with the highest smoothness
light-alloy nuts and bolts	greater weight savings
8 pins on the large chainring	faster shifting
Ultra-Torque™ bb system	lightness, stiffness, simplified assembly and maintenance

Weight: 699 g

2009 PRODUCT RANGE

## ULTRA-TORQUE™ OUTBOARD CUPS



FEATURES	BENEFITS
new treatment (hard anodizing)	reduced wear, corrosion-proof

**2009 PRODUCT RANGE**

## OUTBOARD CUPS - Lab salt spray test (400 hours)

Antifriction treatment (2008)



Hard-anodizing treatment (2009)

**2009 PRODUCT RANGE**

## SKELETON™ BRAKES



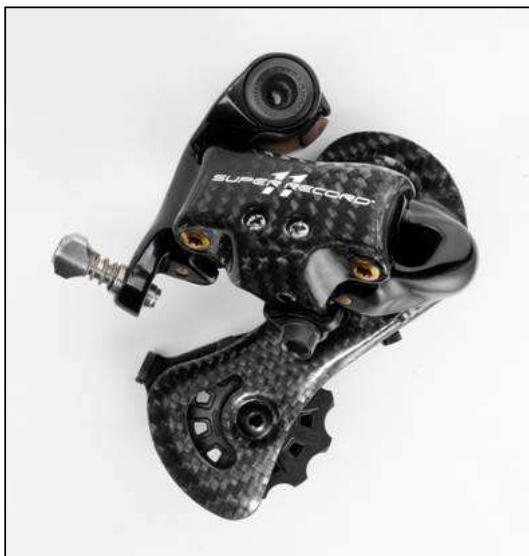
Weight: 282 g

FEATURES	BENEFITS
forged arms	stronger, maximum life cycle
skeletonized arms	greater weight savings with same life and stiffness
differentiated front-rear	powerful front, light and modifiable rear
orbital pad adjustment	optimum interface with the rim, maximum braking performance
light alloy screws and nuts	weight savings
Titanium fixing screws	weight savings
special pad compound	excellent balance between performance on dry and wet surface, modifiable braking and long pad life
ball bearings	long life, low friction

2009 PRODUCT RANGE

SUPER RECORD™

## ULTRA SHIFT™ REAR DERAILLEUR



FEATURES	BENEFITS
Ultra-Shift™ parallelogram geometry	increased stiffness, better and extended shifting accuracy, free-play reduction
Ultra-Shift™ forged aluminium upper body	weight savings and long fatigue life, free-play reduction, better and extended shifting accuracy
Ultra-Shift™ carbon fiber outer plate	better and extended shifting accuracy, free-play reduction, weight savings and long fatigue life, corrosion-proof
metal-carbon cage	light, long fatigue life, corrosion-proof
Titanium cable clamping bolt and mounting bolt	weight savings

Weight: 172 g

2009 PRODUCT RANGE

## ULTRA SHIFT™ REAR DERAILLEUR



FEATURES	BENEFITS
lightened rollers in special rubber	weight savings, damping of vibrations
Upper roller on ceramic bushings	lower friction, longer service life, lower power loss, weight savings, self-lubricating
Lower roller on ceramic ball bearing	lower friction, further improved service life, lower power loss, weight savings, self-lubricating

2009 PRODUCT RANGE

## ULTRA SHIFT™ FRONT DERAILLEUR



## Options:

braze-on, clip-on Ø 32 or 35 mm

FEATURES	BENEFITS
Ultra-Shift™ outer plate	increased stiffness and shifting quickness
Ultra-Shift™ aluminium-composite cage	weight savings, increased shifting quickness, 10 sprockets chain crossing guarantee
Z-shape™ inner plate	greater stiffness, greater thrust on the fork
M-brace™ body	more rigid system, better shifting
standardised Standard/Compact cage	versatility
Even-O™ clamp	more even pressure on the frame, increased compatibility (34.8 ÷ 35.8 mm)
antifriction treatment	long life
titanium hardware	weight savings, corrosion-proof

Weight: 72 g

2009 PRODUCT RANGE

## ULTRA SHIFT™ CARBON ERGOPOWER™ CONTROLS



FEATURES	BENEFITS
lightened / grooved carbon fiber brake lever	greater grip, weight savings, reliability, stiffness, mechanical strength, corrosion-proof, long fatigue life
rolling mechanism on bearings	minimal friction, very high and constant precision, lighter shifting and extended shifting accuracy, basically no wear but serviceable nonetheless
Titanium internal disc mechanism	weight savings
carbon fiber insert on lever 2	aesthetics

Weight: 331 g

2009 PRODUCT RANGE

## ULTRA SHIFT™ SPROCKETS



FEATURES	BENEFITS
steel-titanium (6 Ti sprockets) version	excellent compromise between weight savings and cost
Ultra-Shift™ aluminium frame for last two sprocket triplets	precision and greater stiffness, weight savings
Ultra-Shift™ sprockets synchronization	improved shifting precision, less stress for the chain
Ultra-Shift™ teeth shape	upshift optimization
optimized teeth space	longer life, lower wear
nickel-chrome surface treatments on steel	longer life, lower wear
light-alloy lockring	weight savings

## Options:

11-23, 11-25, 12-25, 12-27

Weight: 177 g

2009 PRODUCT RANGE

## RECORD™ ULTRA SHIFT™ CHAIN



FEATURES	BENEFITS
width 5.5 mm	quiet operation, less interference with adjacent sprockets and chainrings, high-performance shifting
Ultra-Link™ system	extremely high retention force
Ultra-Shift™ outer links	functionality, weight savings
Ni-PTFE antifriction treatment	smoothness, long life
hollow pins	weight savings
new material for the outer link	20% more resistant, reliability, long life

Weight: 242 g

2009 PRODUCT RANGE

## ULTRA-TORQUE™ CARBON CRANKSET



### Options:

170 mm, 172.5 mm, 175 mm  
177.5 mm 180 mm

39-52, 39-53

170 mm, 172.5 mm, 175 mm  
34-50

**2009 PRODUCT RANGE**

## CULT™ TECHNOLOGY



The brand new CULT™ UT™ bottom bracket bearings were developed in codesign with INA-FAG exclusively for Campagnolo with the aim to offer the minimum rolling resistance.

FEATURES	BENEFITS
5/32" premium-grade ceramic balls	lower friction, lower power loss, longer service life, corrosion-proof, simple fast maintenance
Cronitect bearings	maximum corrosion resistance, lower friction, longer service life (oil lubrication, no grease needed)

**2009 PRODUCT RANGE**

## CULT™ TECHNOLOGY



In order to achieve this result was necessary to:

- Replace the lubricating grease with oil
- Use the Cronitect material (Advanced solution by FAG) for inner/outer rings
- Manufacture a tecnopolymer cage with low friction coefficient
- Use hi-quality ceramic balls

2009 PRODUCT RANGE

## CULT™ TECHNOLOGY



### CULT IS NOT “ONLY” A CERAMIC BALL BEARING

A classic bearing with ceramic balls needs some grease in order to protect the rings from corrosion. The bearing manufactured with Cronitect material (Advanced solution by FAG), thanks to its raw material and heat treatment, assures an high hardness and high resistance to corrosion without grease.

2009 PRODUCT RANGE

## CULT™ TECHNOLOGY



### CULT IS NOT “ONLY” A CERAMIC BALL BEARING

A classic bearing with ceramic balls perform an high resistance to corrosion for the balls but a low one for the rings.

This inconsistency was solved by Campagnolo with its CULT bearings that presents a component that can resist to corrosion as no other stainless steel bearing in the market.

**Salt spray test : 200 times more than a classic stainless steel.**

2009 PRODUCT RANGE

## ULTRA TORQUE™ CARBON CRANKSET

FEATURES	BENEFITS
full-carbon unidirectional-multidirectional cranks	stiffness, weight savings and long fatigue life
hollow cranks (Ultra-Hollow™ Structure)	lower weight with same stiffness and life
Ultra-Shift™ light-alloy chainrings	weight savings, increased stiffness
Ultra-Shift™ hard-anodizing treatment	increased resistance to wear, corrosion-proof
Ultra-Shift™ chainrings synchronization	improved shifting precision and quickness
Ultra-Shift™ specialized shifting sectors on outer chainrings	improved shifting precision, quickness and efficiency
Ultra-Shift™ asymmetric teeth profile on inner chainrings	shifting and chain crossing optimization
triple gaskets low-friction bearing seals	good insulation with the highest smoothness
light-alloy nuts and bolts	greater weight savings
8 pins on the large chainring	faster shifting
Ultra-Torque™ bb system	lightness, stiffness, simplified assembly and maintenance

Weight: 695 g

2009 PRODUCT RANGE

## ULTRA-TORQUE™ OUTBOARD CUPS



FEATURES	BENEFITS
new treatment (hard anodizing)	reduced wear, corrosion-proof

2009 PRODUCT RANGE

## SKELETON™ BRAKES



Weight: 275 g

FEATURES	BENEFITS
forged arms	stronger, maximum life cycle
skeletonized arms	greater weight savings with same life and stiffness
differentiated front-rear	powerful front, light and moduable rear
orbital pad adjustment	optimum interface with the rim, maximum braking performance
Titanium screws and nuts	weight savings
special pad compound	excellent balance between performance on dry and wet surface, moduable braking and long pad life
ball bearings	long life, low friction

2009 PRODUCT RANGE

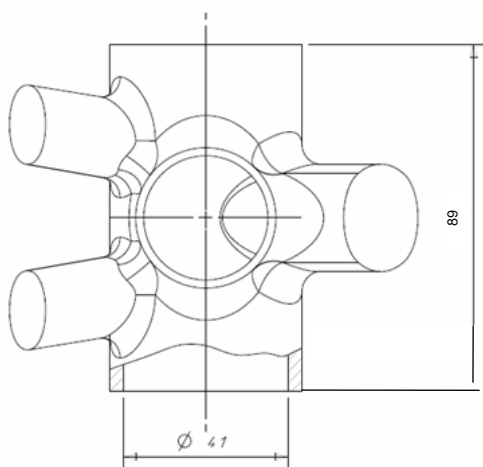
## NEW BB STANDARDS

2009 PRODUCT RANGE

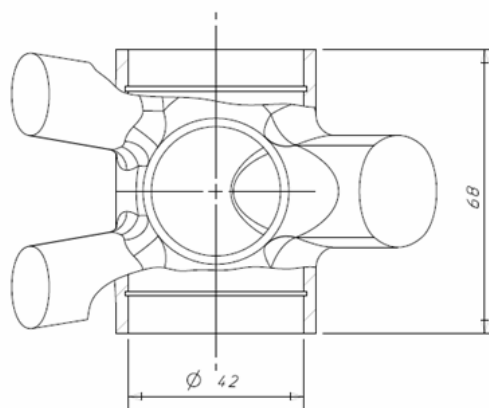
### NEW BB STANDARDS

#### NEW BB STANDARDS

86,5 X 41

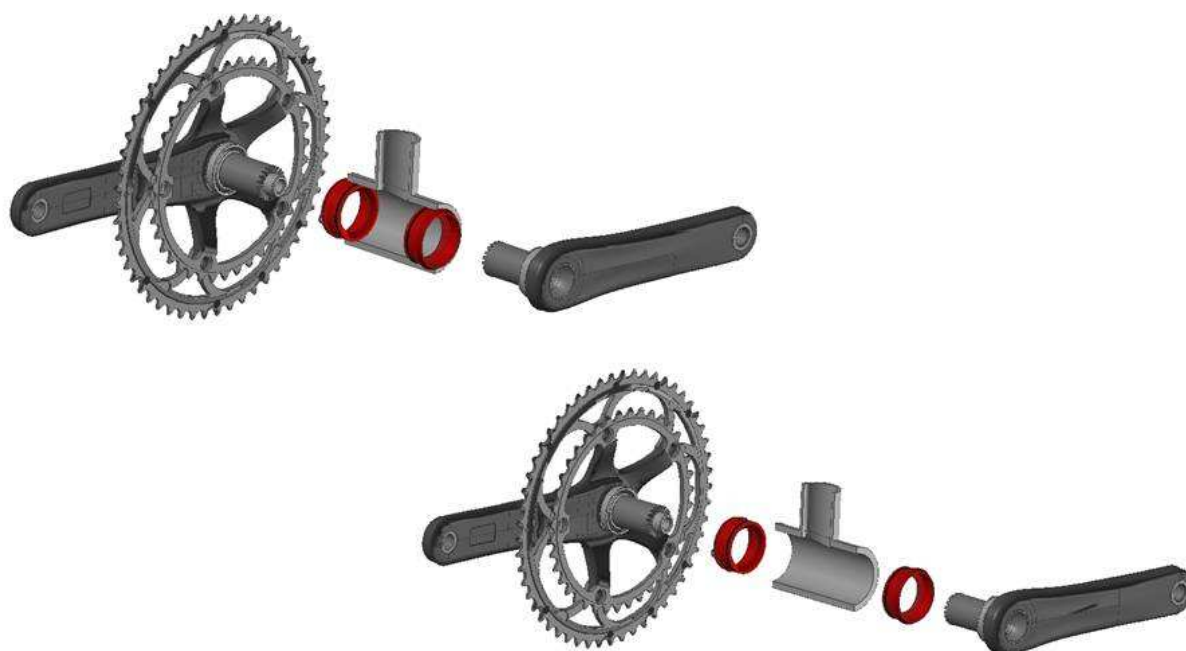


68 X 42 (BB 30)



2009 PRODUCT RANGE

## OVERSIZE BB ADAPTERS



2009 PRODUCT RANGE

## TOOLS

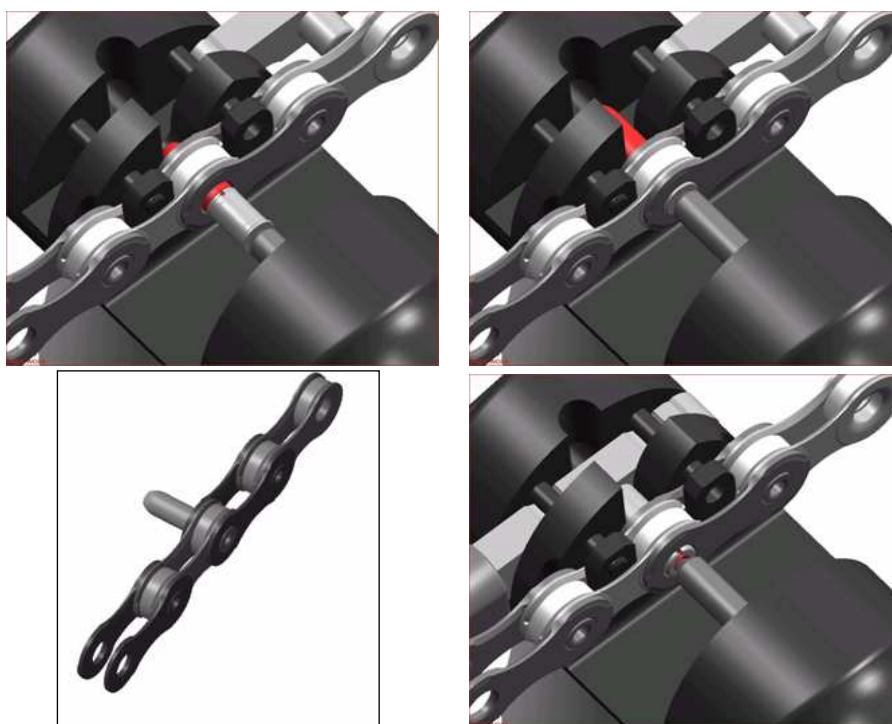
2009 PRODUCT RANGE

UT-CN300 CHAIN TOOL & ULTRA-LINK™



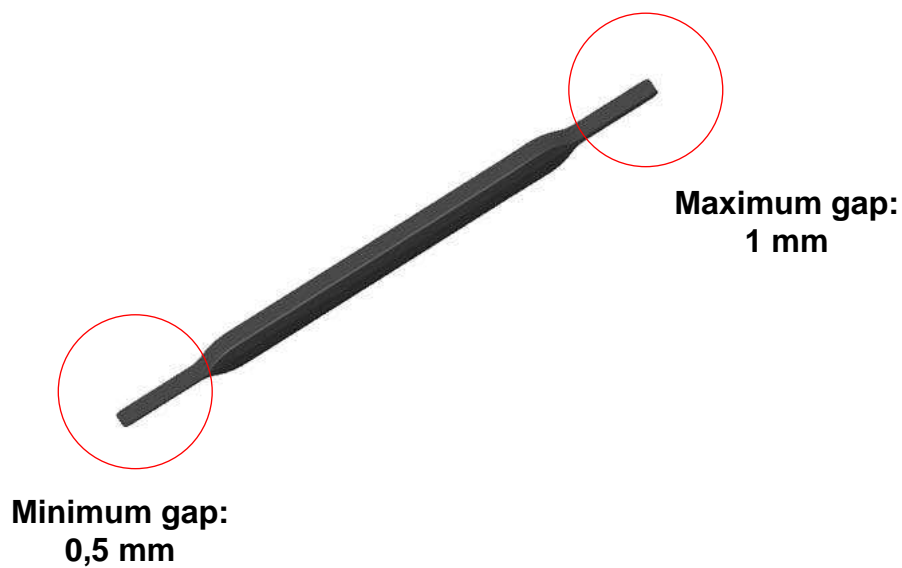
2009 PRODUCT RANGE

UT-CN300 CHAIN TOOL & ULTRA-LINK™



2009 PRODUCT RANGE

## TOOL TO CHECK THE GAP BETWEEN THE CHAIN AND THE DERAILLEUR CAGE



2009 PRODUCT RANGE

## WHEELS

2009 PRODUCT RANGE

## WHEELS

Improved and maximized:

- Reactivity
- Smoothness

2009 PRODUCT RANGE

## VENTO REACTION™



2009 PRODUCT RANGE



## TECHNICAL SPECS

Rim	Black finishing – 28"/15C height/width (mm): 24/20.5
Hubs	Black finishing
Spokes	24 front - 27 rear variable section, stainless steel
Compatibility	Campy 9s/10s/11s

## FEATURES

oversize hub flanges

dynamic balancing

## BENEFITS

stiffness, optimum torque  
transmission

greater stability at high speeds

Weight: 1.827 g

2009 PRODUCT RANGE

# 2-WAY FIT™

TUBELESS & CLINCHER PROFILE

- 2-WAY FIT because we want to promote customer confidence toward tubeless. We want people that trust clincher to have the possibility to try and appreciate the Tubeless technology.

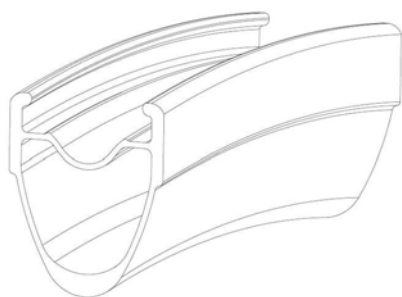
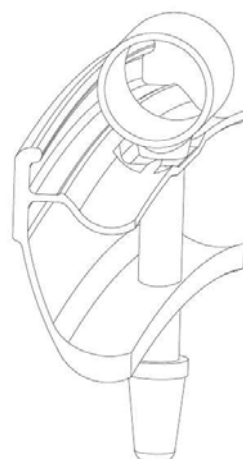
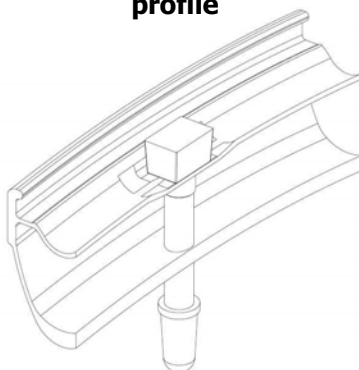
2009 PRODUCT RANGE

# **2-WAY FIT™**

**TUBELESS & CLINCHER PROFILE**

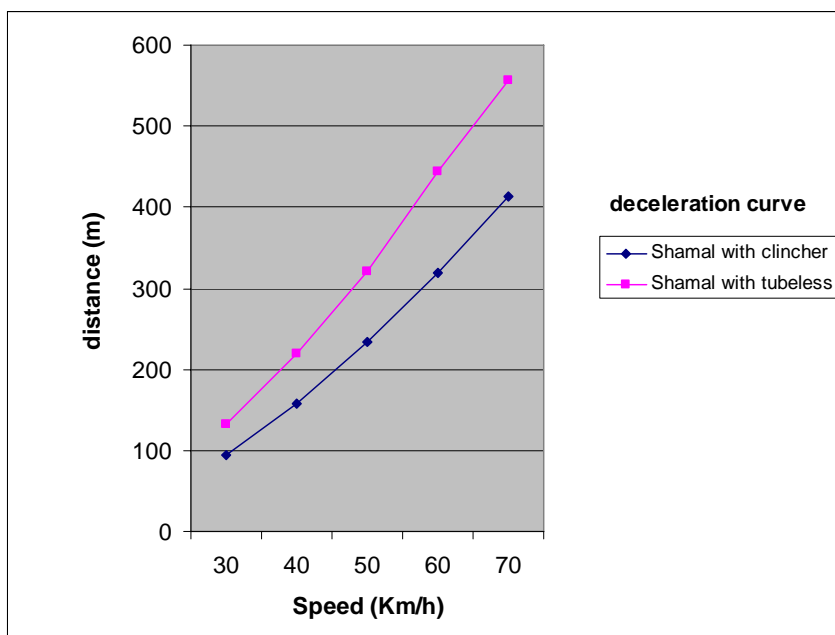
## **TUBELESS BENEFITS**

- Rolling performance, similar to tubular
- Comfort
- Resistance to pinch punctures
- Safety

**2009 PRODUCT RANGE****2-WAY FIT™ profile****Tube on 2-WAY FIT™ profile****Tubeless valve on 2-WAY FIT™ profile****2009 PRODUCT RANGE**

**2-WAY FIT™**  
TUBELESS & CLINCHER PROFILE

**ROLLING PERFORMANCE**



2009 PRODUCT RANGE

**EURUS™** **2-WAY FIT™**  
TUBELESS & CLINCHER PROFILE



2009 PRODUCT RANGE



TECHNICAL SPECS	
Rim	Black finish FRONT: height/width (mm): 24/20.5 REAR: height/width (mm): 28/20.5
Hubs	Black finish
Spokes	variable section, aluminium, aero
Compatibility	Campy 9s/10s/11s HG 8s/9s/10s OG 10
FEATURES	BENEFITS
2-WAY FIT™ rim profile	tubeless and clincher compatible
Tubeless compatible	rolling performance, comfort, resistance to pinch punctures, safety

Weight: 1.549 g

2009 PRODUCT RANGE

## SHAMAL ULTRA™ 2-WAY FIT™

TUBELESS & CLINCHER PROFILE



2009 PRODUCT RANGE



FEATURES	BENEFITS
<b>2-WAY FIT™ rim profile</b>	tubeless and clincher compatible
<b>Tubeless compatible</b>	rolling performance, comfort, resistance to pinch punctures, safety

TECHNICAL SPECS	
<b>Rim</b>	Titanium finishing FRONT: height/width (mm): 24/20.5 REAR: height/width (mm): 28/20.5
<b>Hubs</b>	Alu/carbon, black finishing
<b>Spokes</b>	16 front – 21 rear variable section, aluminium, ultra aero
<b>Compatibility</b>	Campy 9s/10s/11s HG 8s/9s/10s OG 10

Weight: 1.450 g

**2009 PRODUCT RANGE**

## WHEELS – NEW BEARING SYSTEM



FEATURES	BENEFITS
<b>cup and cone bearings</b>	low friction, adjustable, easy to maintain
<b>4x15, 5/32" premium-grade ceramic balls</b>	lower friction, lower power loss, longer service life, corrosion-proof, simple fast maintenance
<b>Cronitect high-grade martensitic hardening steel cups and cones</b>	maximum corrosion resistance, lower friction, longer service life (oil lubrication, no grease needed)
<b>standardised front-rear bearings</b>	handy maintenance

**2009 PRODUCT RANGE**

## WHEELS – BRAKING SYSTEM

**We improved and maximized  
carbon fiber wheels brake pads compound for:**

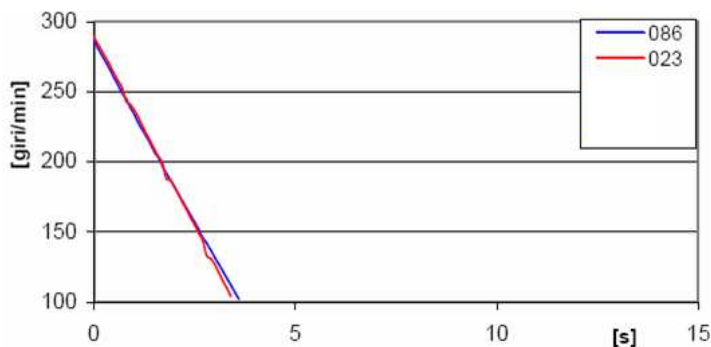
- Better braking performances in dry conditions (close to aluminium)
- Better braking performances in wet conditions
- Perfect balance between performances and wearing
- Compatibility with both tubular and clincher wheels

**2009 PRODUCT RANGE**

**Better braking performances in dry conditions (close to aluminium)**

**Brake pads for aluminium wheels**

**Brake pads for carbon wheels**

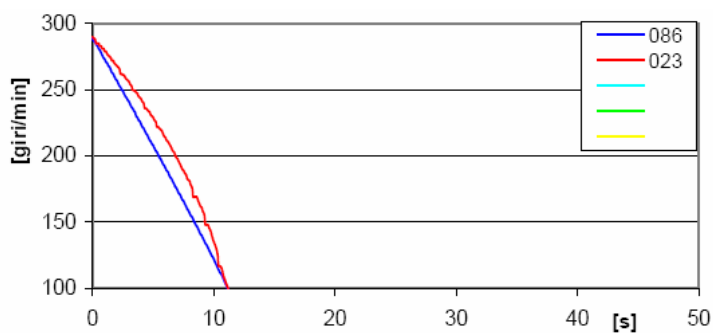


**2009 PRODUCT RANGE**

## Better braking performances in wet conditions

Brake pads for aluminium wheels

Brake pads for carbon wheels



2009 PRODUCT RANGE

## HYPERON ULTRA TWO™ clincher



2009 PRODUCT RANGE



FEATURES	BENEFITS
aluminium oversize right-hand rear flange	rigidity, maximum torque transmission
special brake pads BR-RE701/2 (Campagnolo) BR-701X/2X (Dura-Ace)	maximum modulability on dry and wet surfaces, compatible with both tubular and clincher Campagnolo carbon fiber wheels



TECHNICAL SPECS	
<b>Rim</b>	Carbon fiber FRONT: height/width (mm): 21/20.5 REAR: height/width (mm): 23/20.5
<b>Hubs</b>	Carb/alu
<b>Spokes</b>	22 front – 24 rear variable section, stainless steel, aero
<b>Compatibility</b>	Campy 9s/10s/11s HG 8s/9s/10s OG 10

Weight: 1.345 g

2009 PRODUCT RANGE

## HYPERON ULTRA TWO™ tubular



2009 PRODUCT RANGE



FEATURES	BENEFITS
special brake pads BR-RE701/2 (Campagnolo) BR-701X/2X (Dura-Ace)	maximum modulability on dry and wet surfaces, compatible with both tubular and clincher Campagnolo carbon fiber wheels



TECHNICAL SPECS	
<b>Rim</b>	Carbon fiber FRONT: height/width (mm): 19/20 REAR: height/width (mm): 21/20
<b>Hubs</b>	Carb/alu
<b>Spokes</b>	22 front – 24 rear variable section, stainless steel, aero
<b>Compatibility</b>	Campy 9s/10s/11s HG 8s/9s/10s OG 10

Weight: 1.231 g

2009 PRODUCT RANGE

## BORA ULTRA TWO™



2009 PRODUCT RANGE



FEATURES	BENEFITS
aluminium oversize right-hand rear flange	rigidity, maximum torque transmission
special brake pads BR-RE701/2 (Campagnolo) BR-701X/2X (Dura-Ace)	maximum modulability on dry and wet surfaces, compatible with both tubular and clincher Campagnolo carbon fiber wheels



TECHNICAL SPECS	
<b>Rim</b>	Carbon fiber height/width (mm): 50/20
<b>Hubs</b>	Carb/alu
<b>Spokes</b>	18 front - 21/G3™ rear variable section, stainless steel, aero
<b>Compatibility</b>	Campy 9s/10s/11s HG 8s/9s/10s OG 10

Weight: 1.319 g

**2009 PRODUCT RANGE**

## GHIBLI ULTRA™ rear - road



**2009 PRODUCT RANGE**



FEATURES	BENEFITS
aramidic fibre tensile structure	maximum strength and long fatigue life
disc profile	maximum aerodynamic penetration
braking surface in aluminium	high braking performance with standard pads



TECHNICAL SPECS	
Rim	Alu/aramidic fiber – 28" width: 19 mm
Hub	alu
O.L.D.	132 mm
Compatibility	9s (10s spacing) requires special sprockets
Nominal weight	985 g

Weight: 985 g

**2009 PRODUCT RANGE**

## GHIBLI™ rear – track



**New  
graphics**

**2009 PRODUCT RANGE**

# OEM MANUAL

Available from EUROBIKE 2008

**2009 PRODUCT RANGE**

## ORIGINAL SPARE PARTS

### COMPATIBILITY BETWEEN FRONT DERAILLEURS AND ERGOPOWER LEVERS FOR 2009 RANGE AND PREVIOUS – 10 SPEED DRIVETRAINS

ERGOPOWER LEVER	FRONT DERAILLEUR	OPTIMAL FUNCTIONALITY
2009 ULTRA-SHIFT	2009	YES
	2008 QS (QUICK-SHIFT)	NO *
2008 ESCAPE AND QS (QUICK-SHIFT)	2009	YES, WITH CABLE PLATE * *
2009 FLAT BAR	2009	YES, WITH CABLE PLATE * *
	2008 QS (QUICK-SHIFT)	YES
2008 FLAT BAR	2009	YES, WITH CABLE PLATE * *
2009 ESCAPE	2009	YES, WITH CABLE PLATE * *
	2008 QS (QUICK-SHIFT)	YES

\* the shifting travel is wider (plus one click) but not worse than 2008 Ergopower/derailleur combination

\* \* cable plate available as a spare part (FD-CE011) or provided with 2009 Ergopower levers

**2009 PRODUCT RANGE**

COMPATIBILITY BETWEEN FRONT DERAILLEURS AND ERGOPOWER LEVERS  
FOR 2009 RANGE AND PREVIOUS – 10 SPEED DRIVETRAINS

DERAILLEUR CABLE PLATE

